

the erosion of a neolithic enclosure site ottenburg, belgium



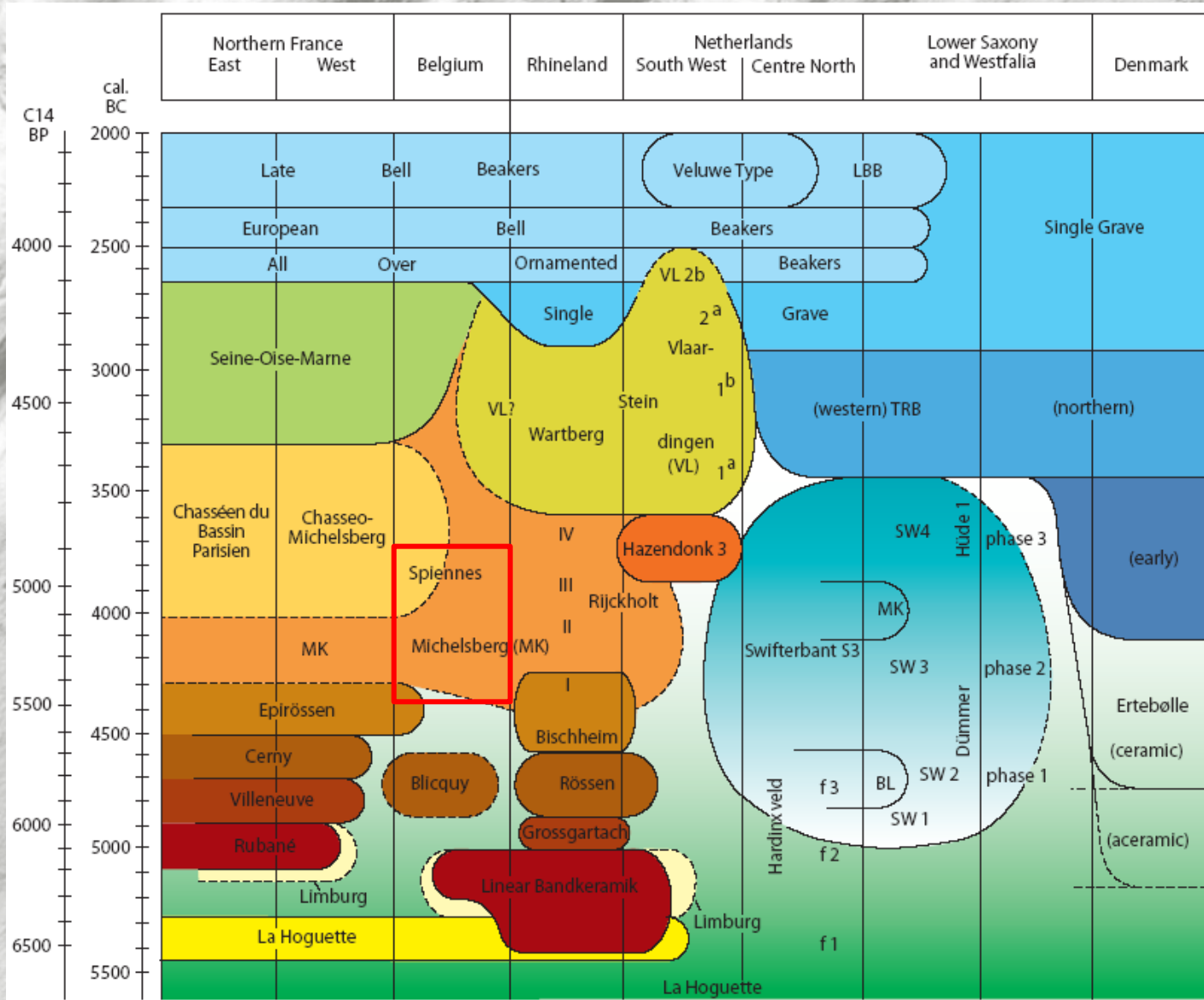
the erosion of a neolithic enclosure site ottenburg, belgium

Project aims

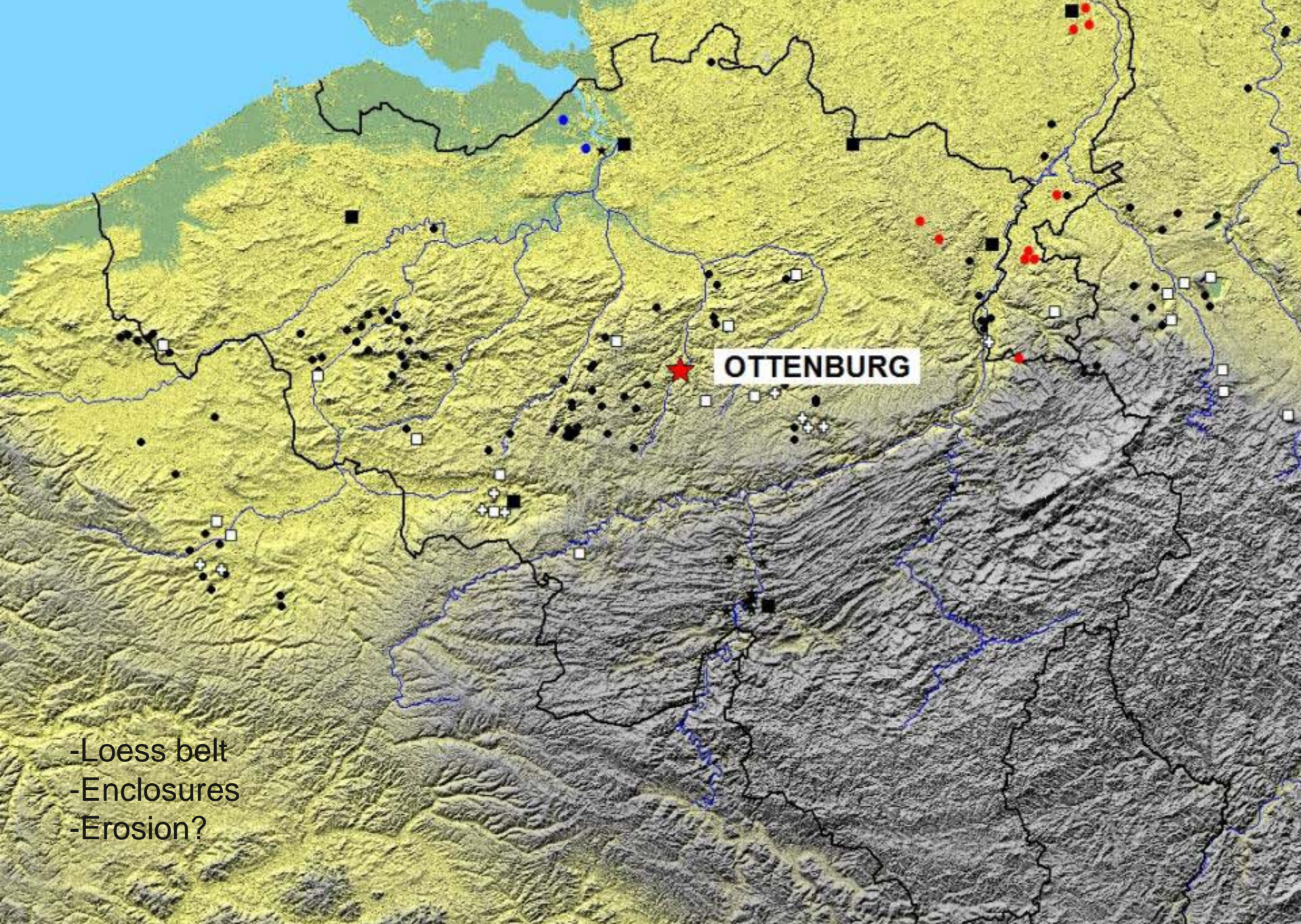
- evaluation & management
- case use Lidar (2002/2003)

Case study

- Neolithic enclosure sites

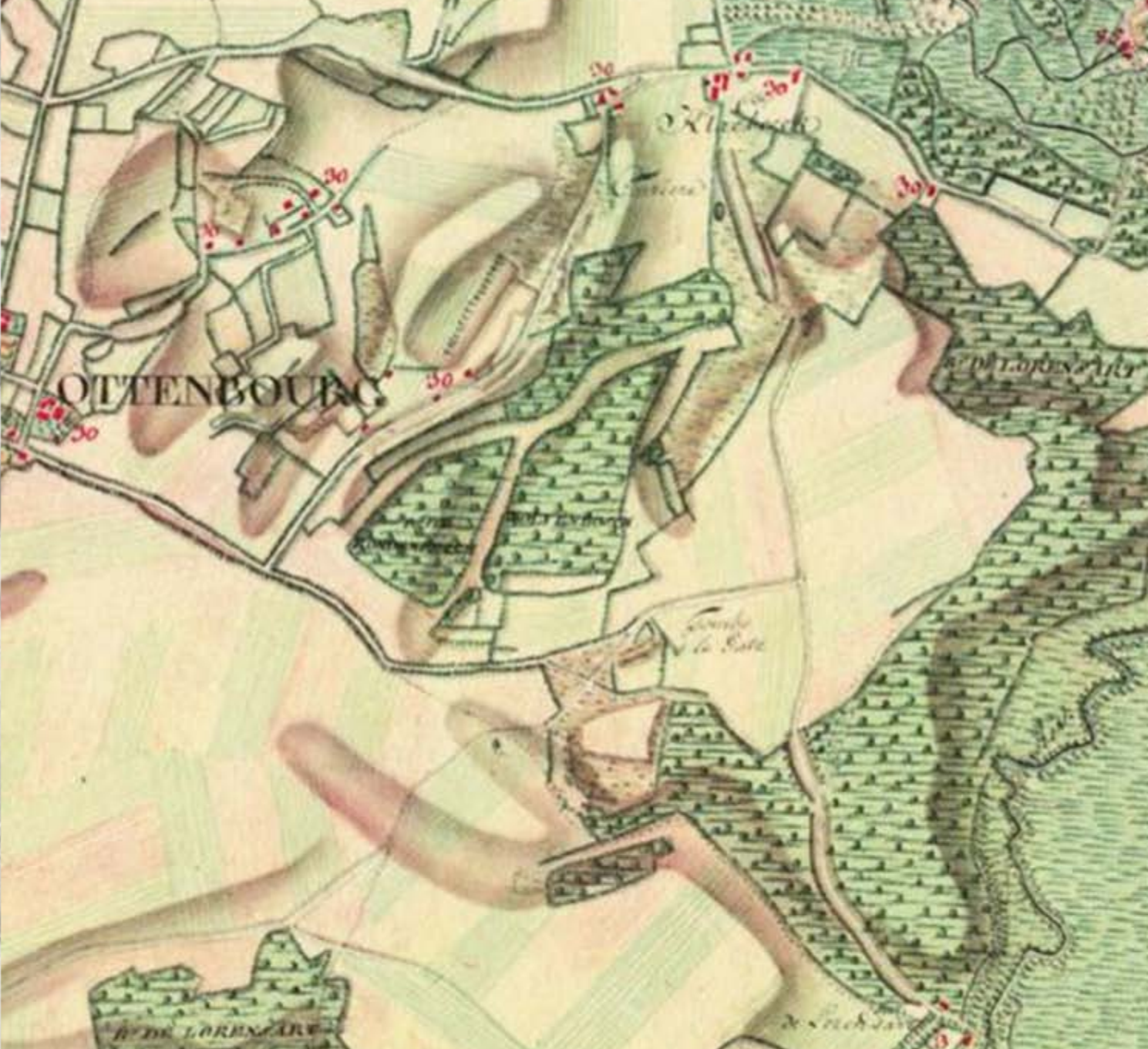


© L.P. Louwe Kooijmans



OTTENBURG

- Loess belt
- Enclosures
- Erosion?



Ferraris 1777
Carte-de-Cabinet
of the Austrian
Netherlands

Introduction

DEM

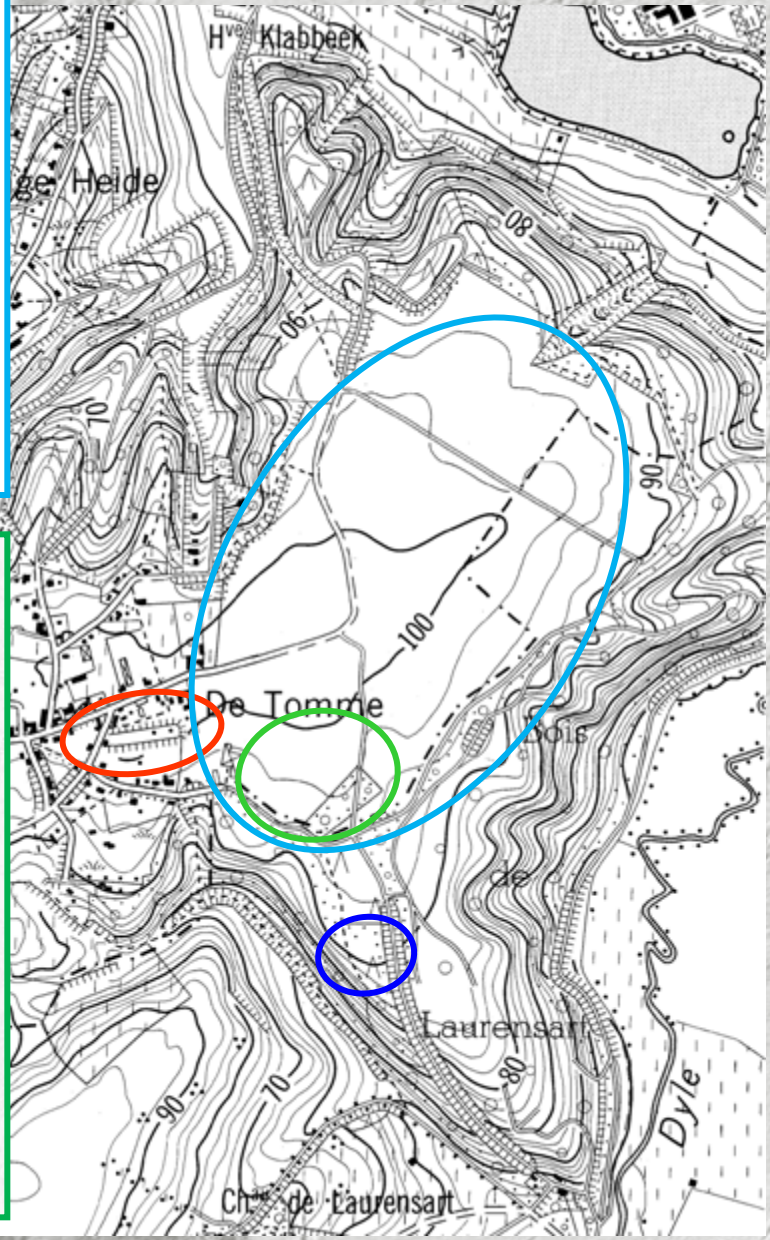
Historical erosion

Current erosion

Management



B. Clarys



Ottenbur

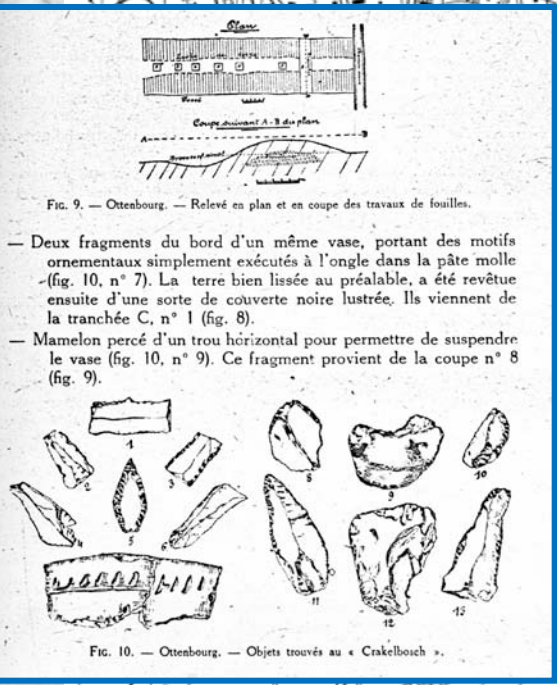
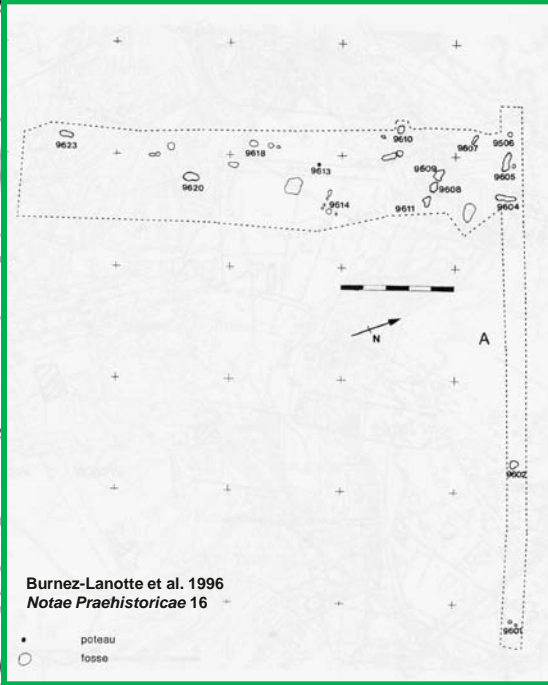


Fig. 9. — Ottenbourg. — Relevé en plan et en coupe des travaux de fouilles.

- Deux fragments du bord d'un même vase, portant des motifs ornementaux simplement exécutés à l'ongle dans la pâte molle (fig. 10, n° 7). La terre bien lissée au préalable, a été revêtue ensuite d'une sorte de couverte noire lustrée. Ils viennent de la tranchée C, n° 1 (fig. 8).
- Mamelon percé d'un trou horizontal pour permettre de suspendre le vase (fig. 10, n° 9). Ce fragment provient de la coupe n° 8 (fig. 9).

Fig. 10. — Ottenbourg. — Objets trouvés au « Crakelbosch ».



Burnez-Lanotte et al. 1996
Notae Praehistoricae 16

• poteau
• fosse



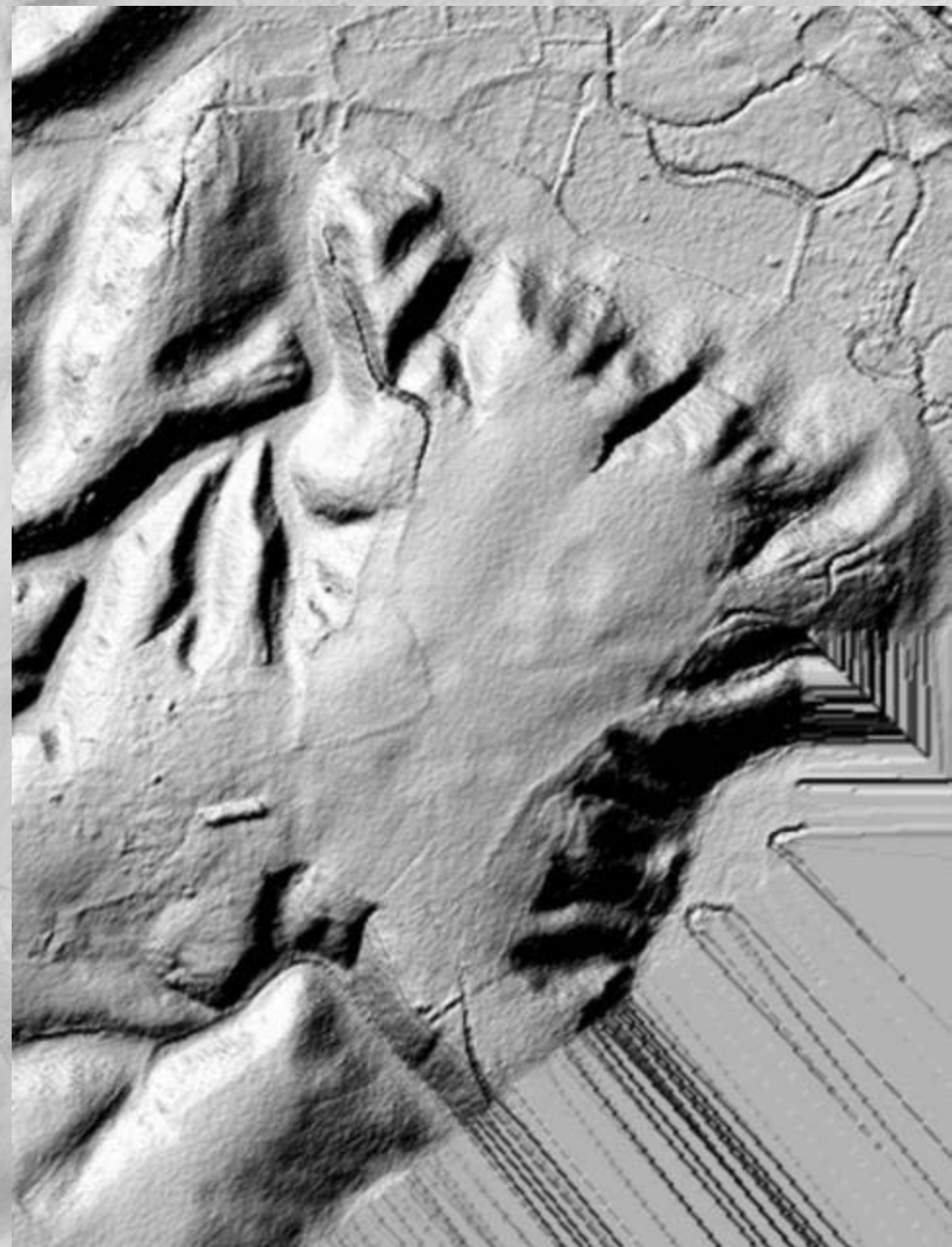
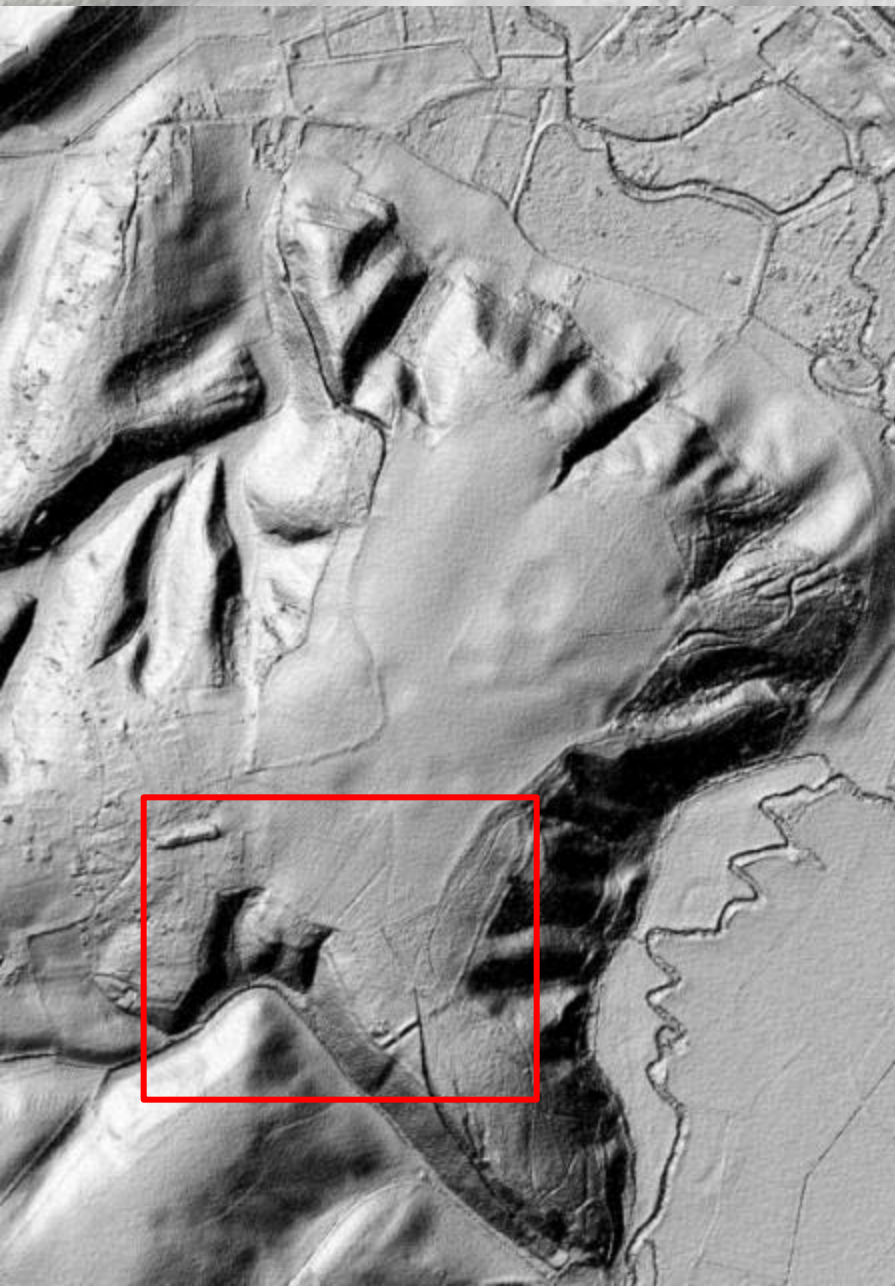
Method

DEM

- Construction based on Lidar data
- Visual inspection

Historical erosion: augering

Present-day erosion: modelling



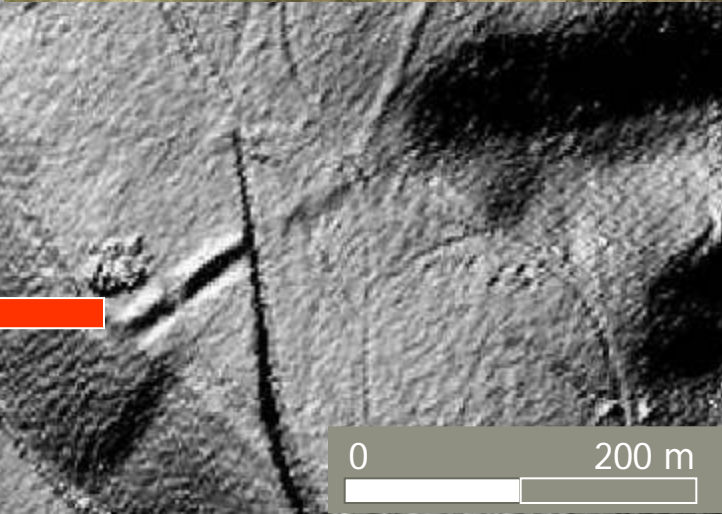
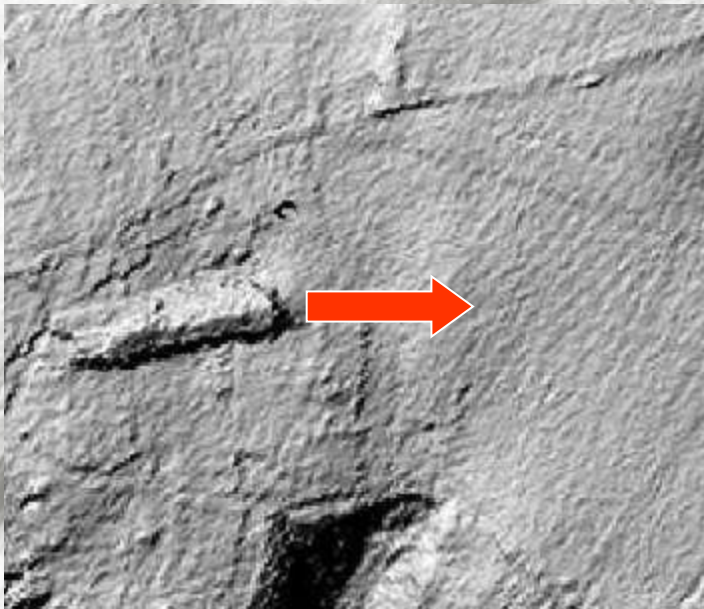
Introduction

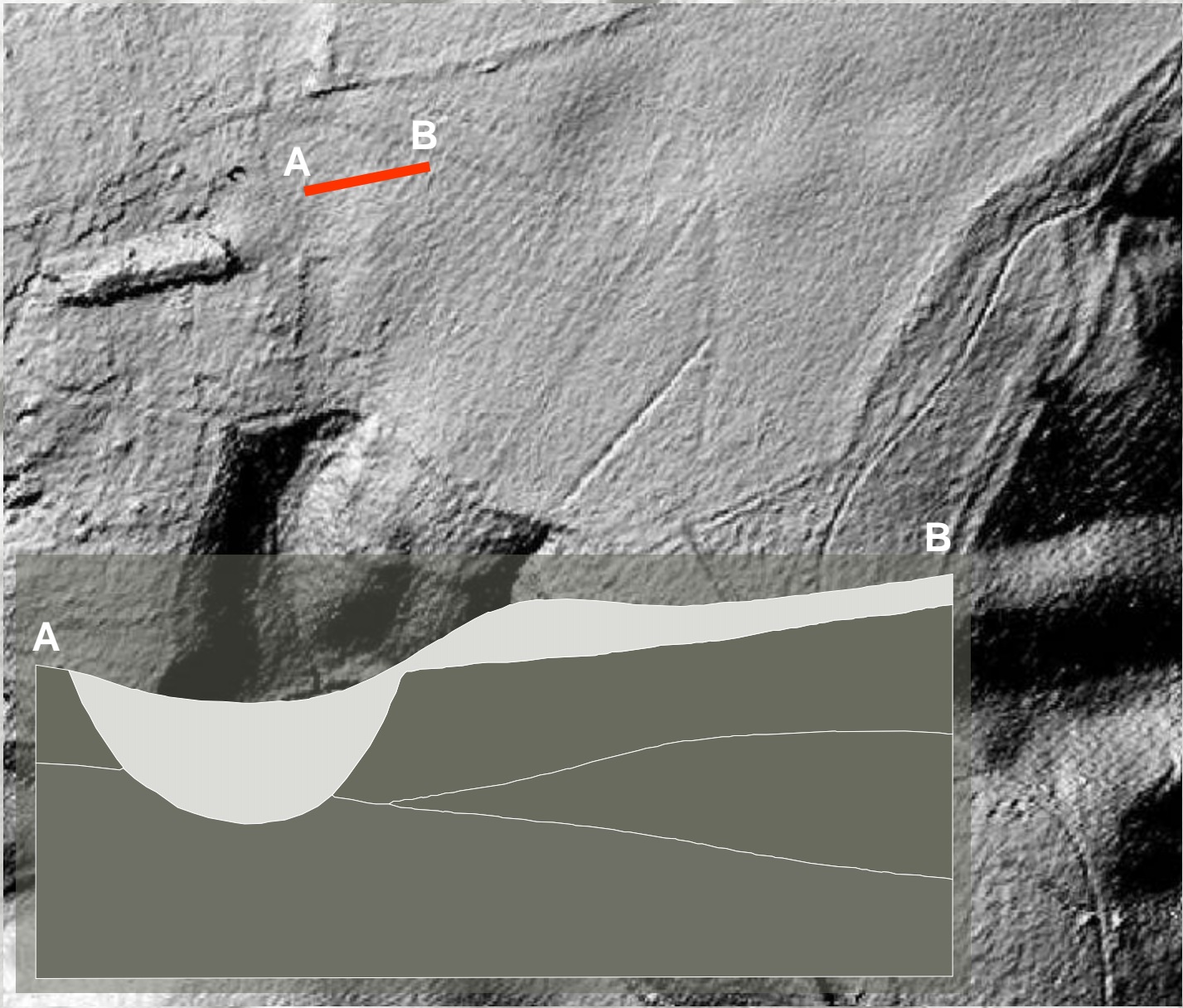
DEM

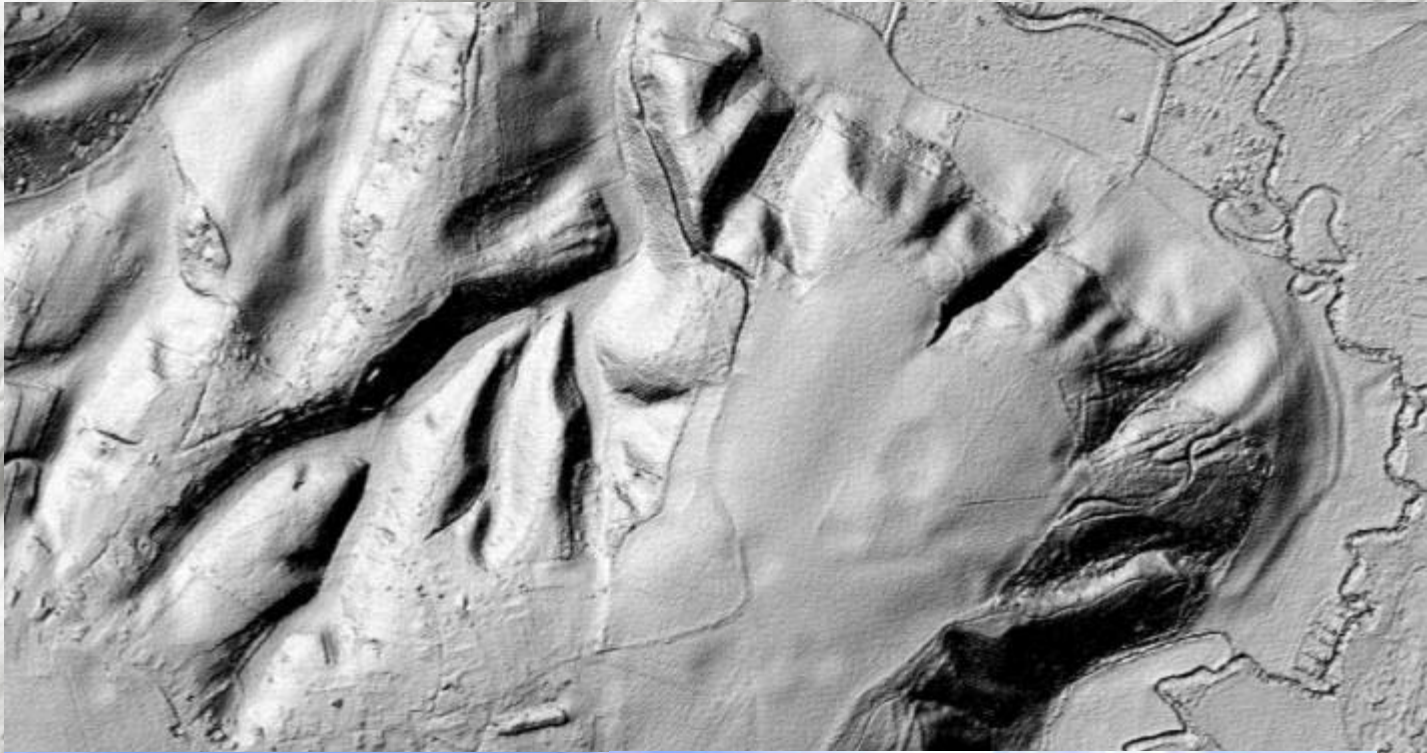
Historical erosion

Current erosion

Management







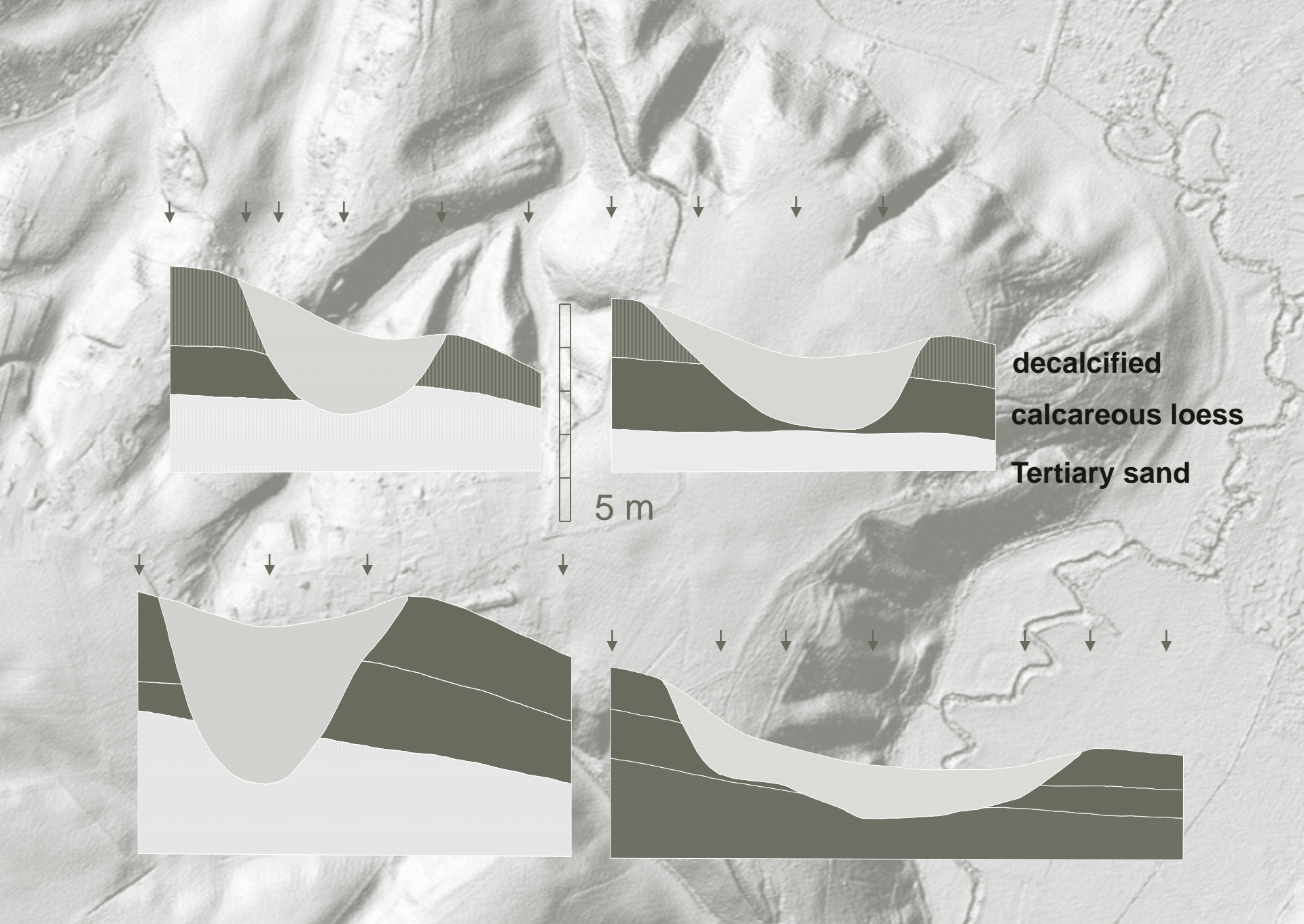
Introduction

DEM

Historical erosion

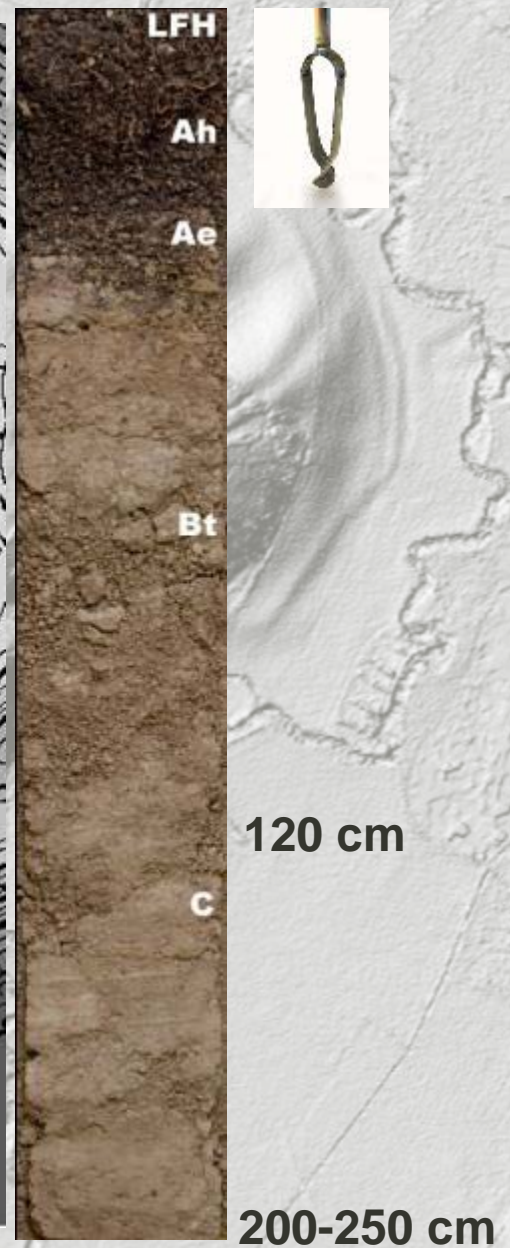
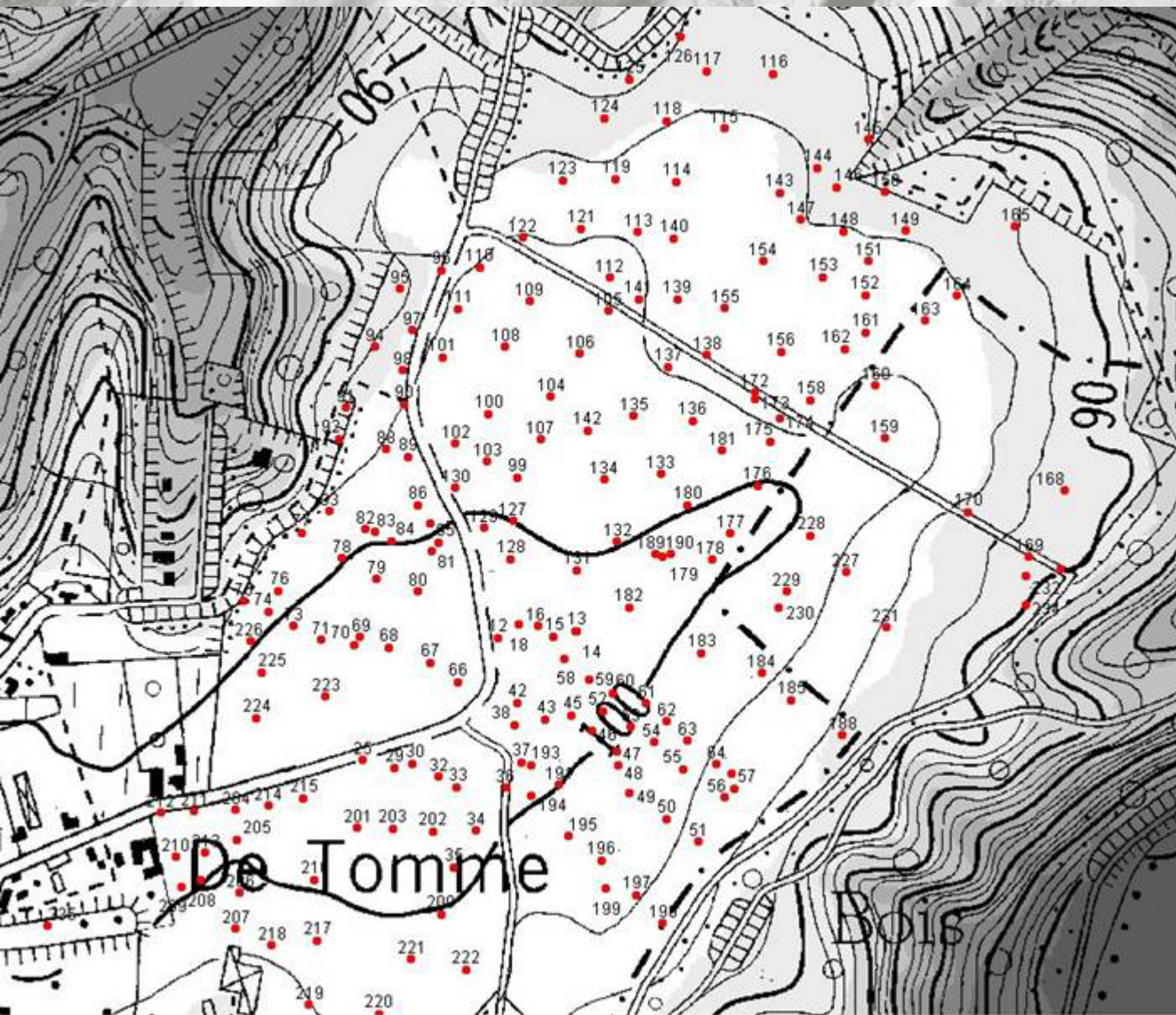
Current erosion

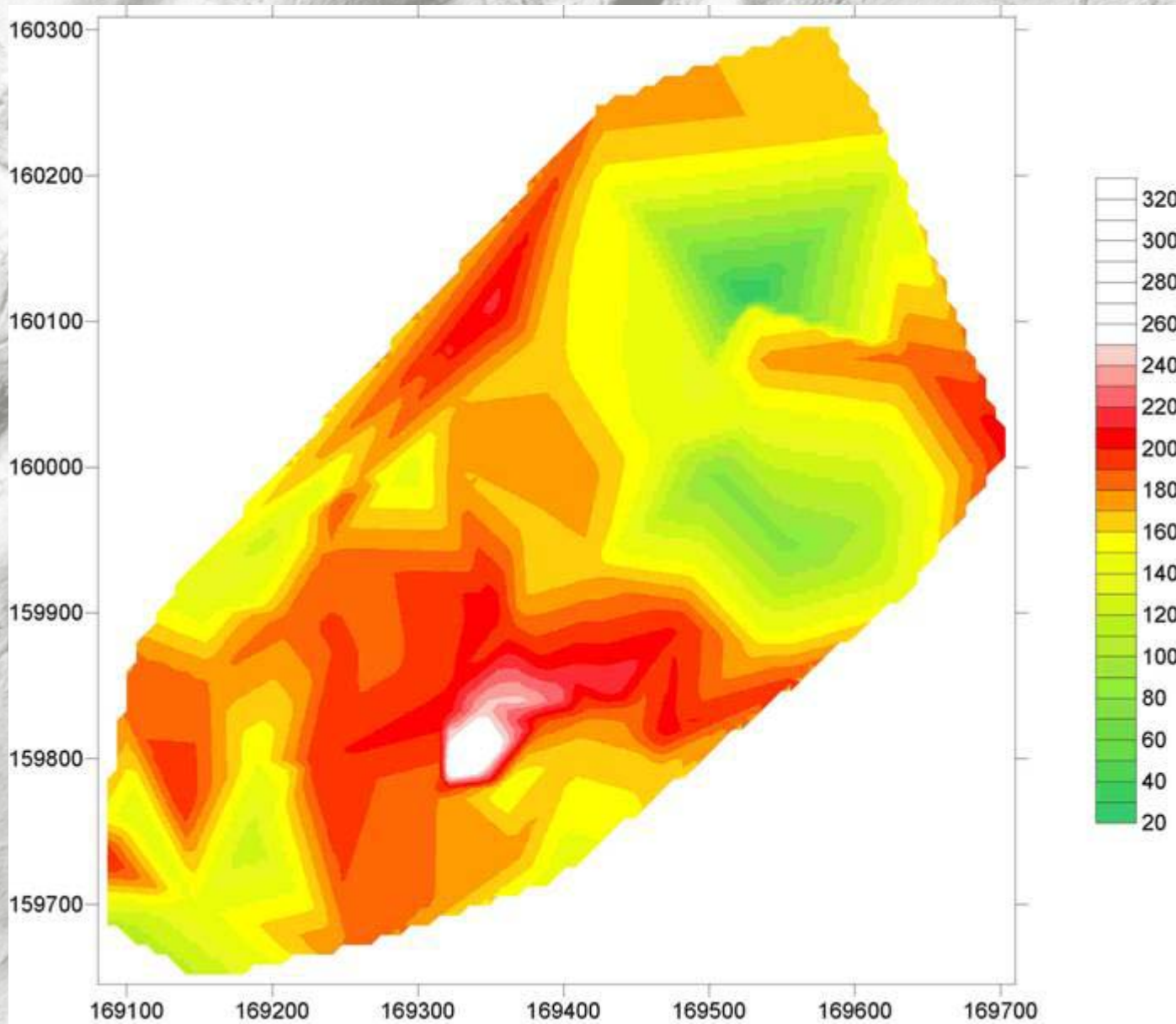
Management



**decalcified
calcareous loess**
Tertiary sand

5 m

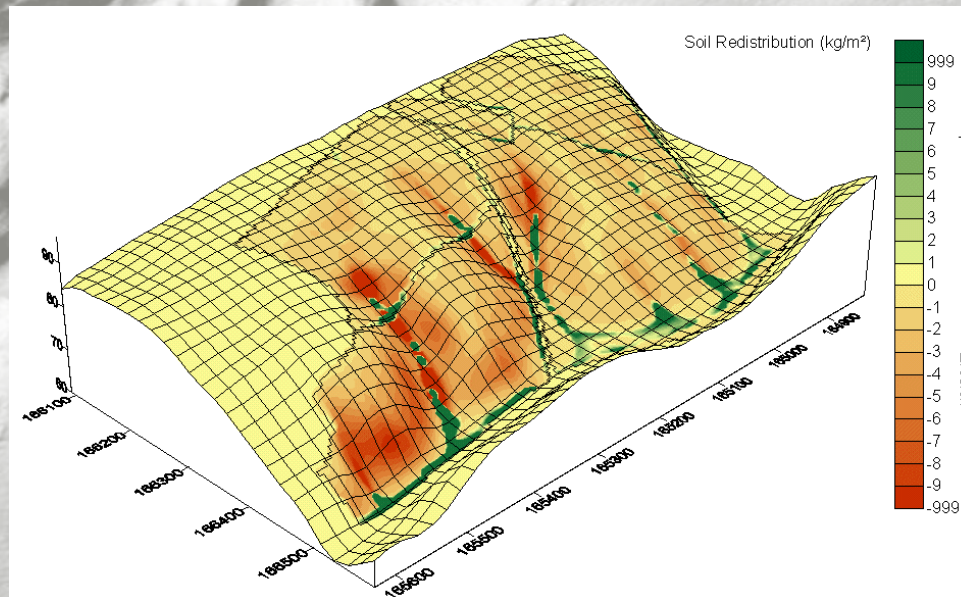




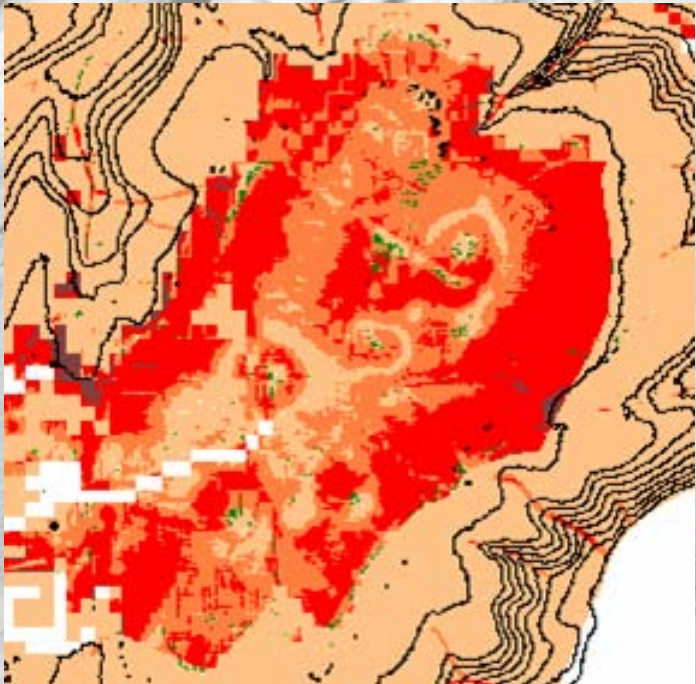
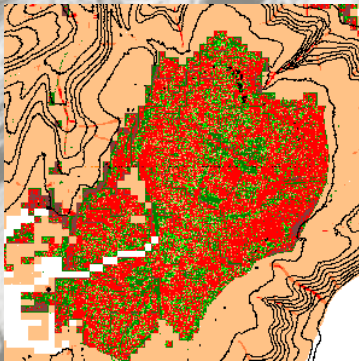
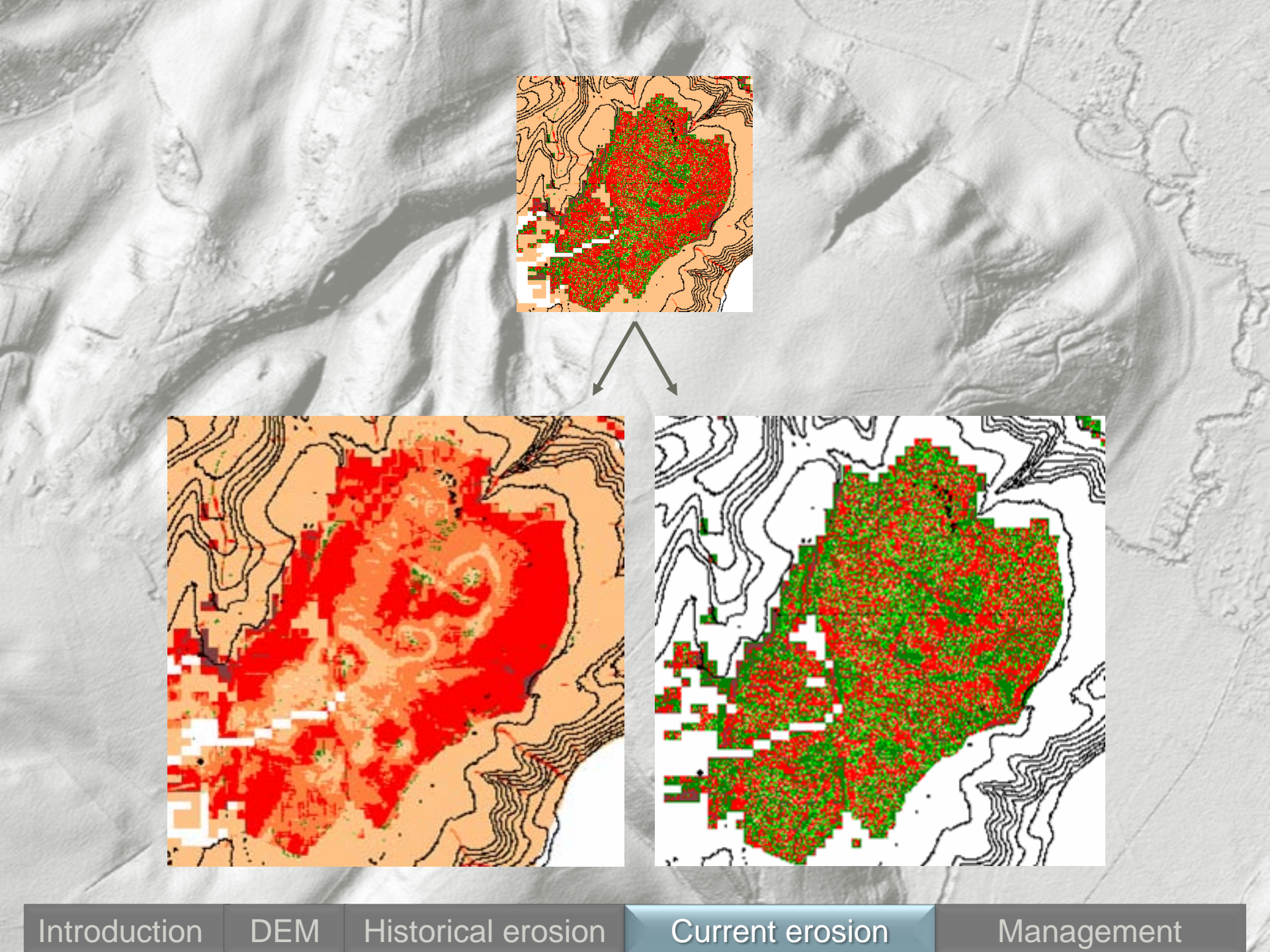
Modelling present-day erosion

WaTEM/SEDEM

<http://geo.kuleuven.be/geography/modelling/erosion/index.htm>



- Spatially distributed soil erosion & sediment delivery model
- Simulate impact of soil conservation & sediment control measures
- Water erosion: RUSLE
 - + Field borders, tillage direction & road infrastructure



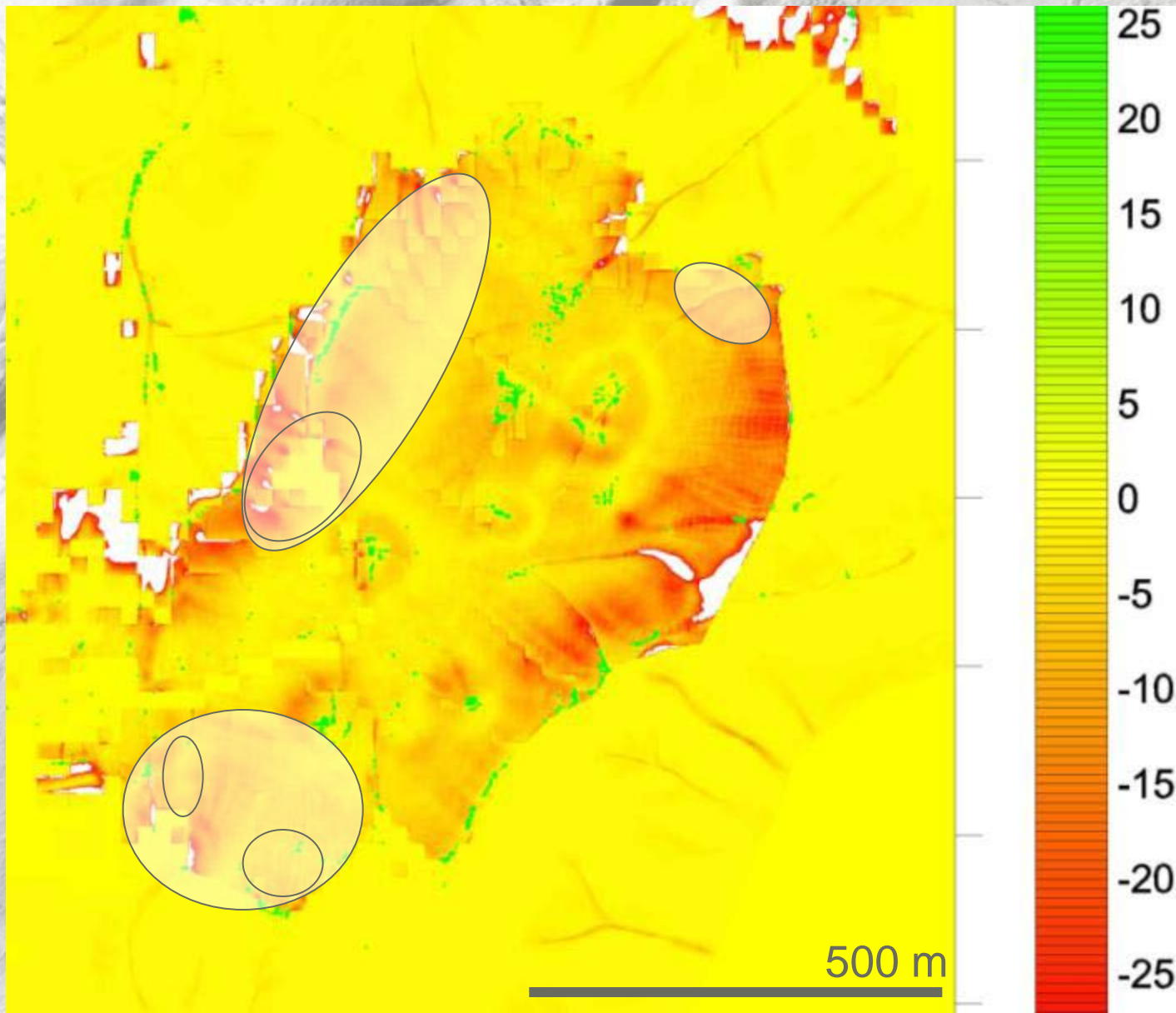
Introduction

DEM

Historical erosion

Current erosion

Management



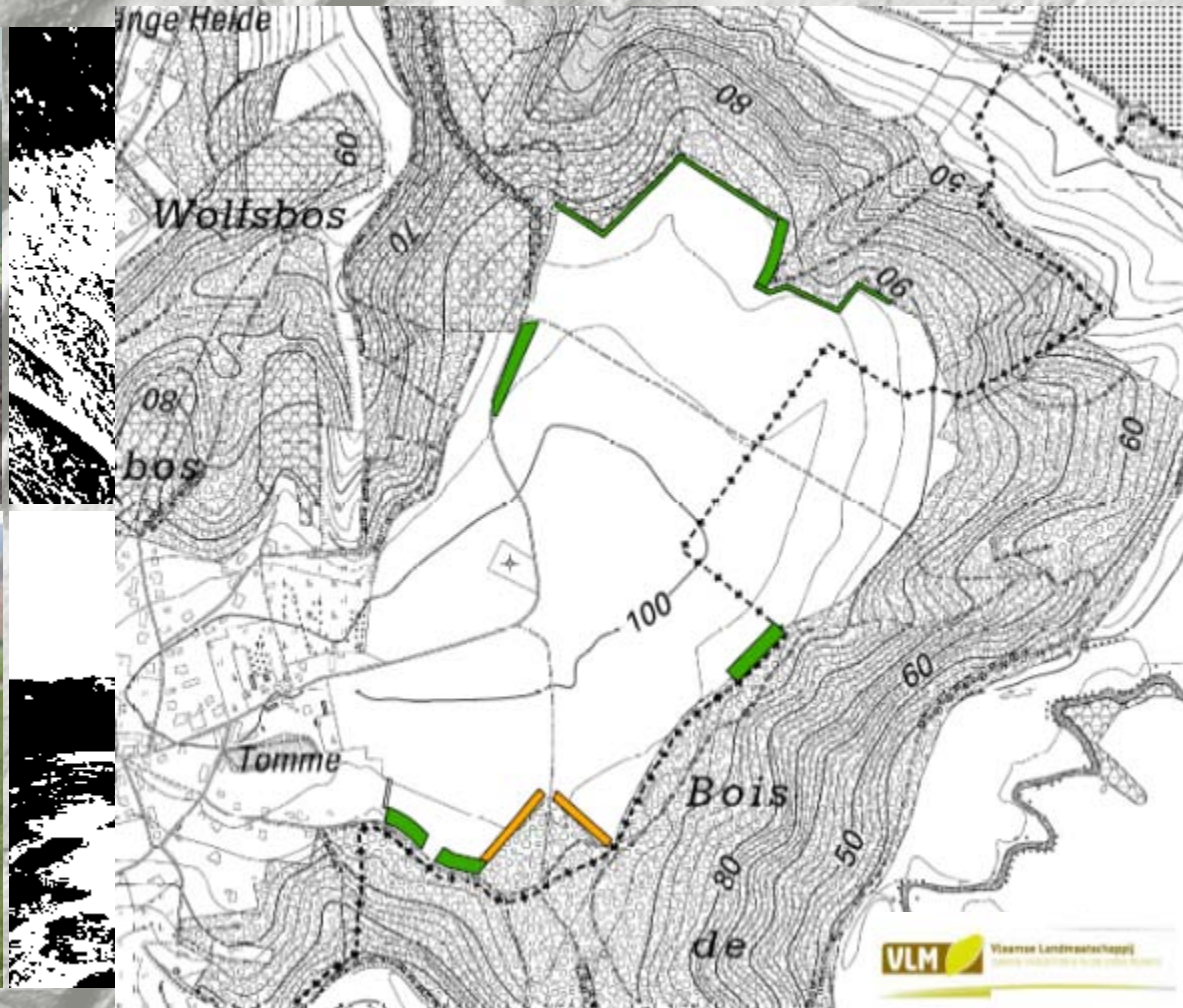
Introduction

DEM

Historical erosion

Current erosion

Management



Introduction

DEM

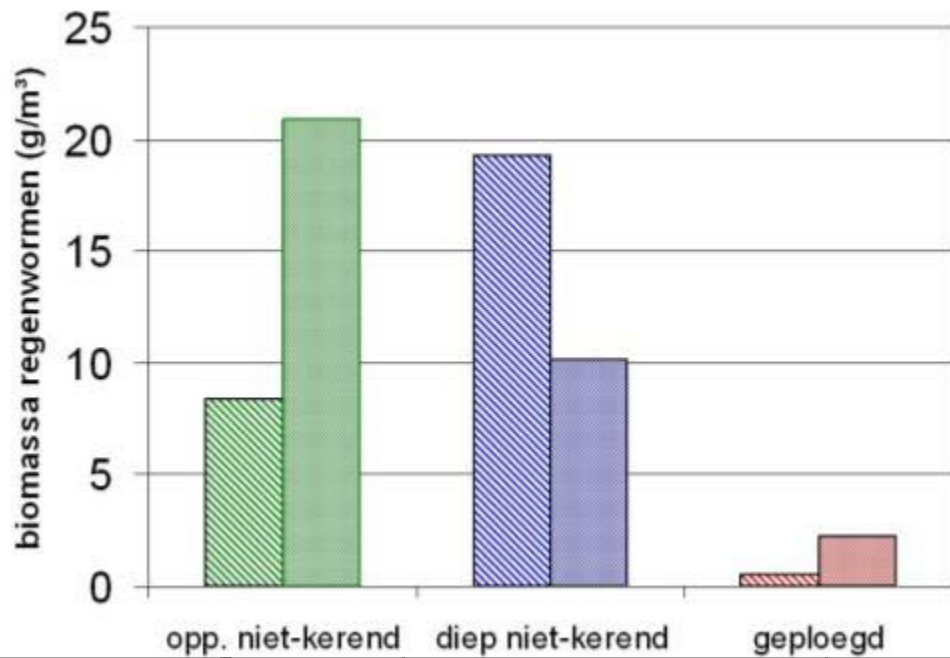
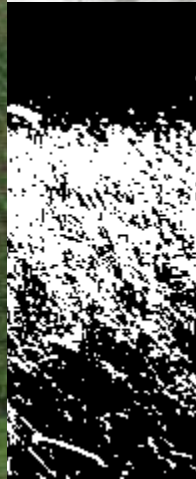
Historical erosion

Current erosion

Management

conventional

conservation



Introduction

DEM

Historical erosion

Current erosion

Management



Thank you for your attention